

# clinell®

www.clinell.com

Kills at least  
**99.99%**  
of norovirus in  
1 minute<sup>1</sup>



## CLINELL UNIVERSAL RANGE THE MOST TRUSTED WIPE IN THE UK

### The most effective universal formula on the market

A mix of biocides with different mechanisms of action prevents bacterial resistance and superbug formation<sup>2</sup>.

### Multi-purpose

Acts as a disinfectant and detergent, replacing the need for different types of wipes and surface cleaners.

### Dermatologically tested

No irritation or sensitisation in line with safe use.

### Proven efficacy against:

MRSA, *Acinetobacter*, VRE, *Klebsiella*, *Pseudomonas*, Norovirus, Hepatitis B & C and many more<sup>1</sup>.

### CE certified Class IIa medical devices

The bucket, tub, 200 wipe pack, 50 wipe clip pack and 50 wipe adhesive back pack conform to the Medical Device Directive as Class IIa devices.

### No damage to surfaces or equipment

With nearly neutral pH, Clinell Universal Wipes are ideal for use on mattresses and safe to use on many types of rubber, plastic and metal.

### Simple, easy and reliable

No dilution errors: the pre-measured dose is consistently the correct concentration.

### Cost effective

Saves money by replacing multiple cleaning products.

# UNIVERSAL RANGE

Universal's unique, patented formula makes it the most effective wet wipe on the market. The combination of biocides act as a powerful high grade disinfectant to ensure no microbial resistance can develop over time<sup>2</sup>.



## Antimicrobial activity

Powerful patented biocidal formulation based on a synergistic mix of quaternary ammonium compounds and a polymeric biguanide – each with a completely different mechanism of action. This ensures the widest spectrum of activity whilst mediating against resistance.

### The formulation includes biocidal performance against:

#### GRAM-POSITIVE BACTERIA

Including: *Staphylococcus aureus* and MRSA, Enterococci and VRE.

#### GRAM-NEGATIVE BACTERIA

Including: *Pseudomonas*, *E.coli*, *Acinetobacter* and *Klebsiella*.

#### FUNGI

Including: *Candida albicans*.

#### MYCOBACTERIA

Including: *Mycobacterium bovis*.

#### ENVELOPED VIRUSES

Including: MERS-CoV, Hepatitis B & C and HIV.

#### NON-ENVELOPED VIRUSES

Including: Norovirus.

<b>BACTERIA</b>	<b>TEST</b>
<i>Acinetobacter baumannii</i>	EN 13727
<i>Escherichia coli (E. coli)</i>	EN 13727
<i>Pseudomonas aeruginosa</i>	EN 13727
<i>Staphylococcus aureus (MRSA)</i>	EN 13727
<i>Enterococcus hirae</i>	EN 13727
<i>Klebsiella pneumoniae (ESBL)</i>	EN 13727
<i>Enterococcus faecalis</i>	EN 13727
<i>Enterococcus faecium (VRE)</i>	EN 13727
<b>MYCOBACTERIA</b>	
<i>Mycobacterium bovis</i>	EN 14348
<b>FUNGI</b>	
<i>Candida albicans</i>	EN 13624
<b>VIRUSES</b>	
Norovirus	EN 14476
HIV	EN 14476
Hepatitis B	ASTM E1052
Hepatitis C	EN 14476
MERS-CoV	EN 14476

## Contact times

Contact time is the time needed for a disinfectant to be in contact with a microorganism to kill it.

If a disinfectant claims to kill 99.9% of MRSA in 1 minute, in order for it to kill the bacteria, the surface needs to be visibly wet for at least 1 minute. This allows the disinfectant to be in contact with the microorganism.

It is important when using disinfectant wipes to leave the surface to air dry and never dry the surface manually.

Unrealistic contact times result in impractical products, which may not be effective under realistic conditions. Clinell perform rigorous tests to ensure all contact times and kill claims are achievable in real world conditions.

## Adhesive Back Pack

Ensures the NHS' most trusted disinfectant wipes are always conveniently at hand. Simply peel off the backing tape and stick to the side of an ultrasound machine or nearby wall. The powerful adhesive holds the pack in place yet is easily removed without leaving behind any unsightly residue.

## Clip pack 50s

Working with the 'Design Bugs Out'<sup>3</sup> initiative, we have taken our bestselling Universal Wipes and given them an integrated clip, perfect for keeping wipes conveniently accessible, off the floor, and nearby whenever you need them.

The integrated clip is reinforced and angled for a firm grip and securely fits on to BP machine stands, porters' chairs, bed frames, monitor stands, trolleys and many more.



## Wipes for surface disinfection and cleaning of non-invasive medical devices.



## Non-invasive medical devices – surface and equipment cleaning

Clinell Universal CE Marked Wipes can be used to clean and disinfect the following surfaces and equipment. These surfaces are rarely cleaned and have been shown to cause infection<sup>4-7</sup>.

If unsure, contact the Infection Prevention and Control Team. This is not an exhaustive list:

- Ultrasound transducers
- Doppler probes
- Blood pressure machines
- Blood pressure cuffs
- Pulse oximeter probes
- Stethoscopes
- ECG machines
- Radiology equipment
- Monitors

**CE 0050**

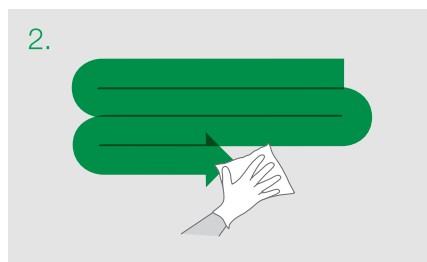
CE certified medical devices - the bucket (and refill), tub (and refill), 500ml spray, 50 packs and 200 wipe pack wipes are all Class IIa medical devices.

## How to clean surfaces effectively

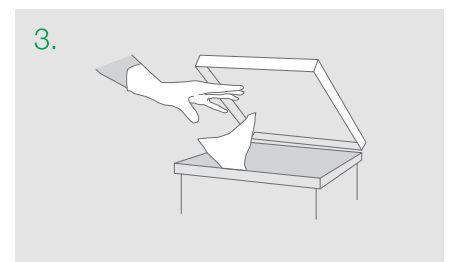
### WIPES:



1. Perform a risk assessment, wear recommended PPE. Take one wipe from the pack.

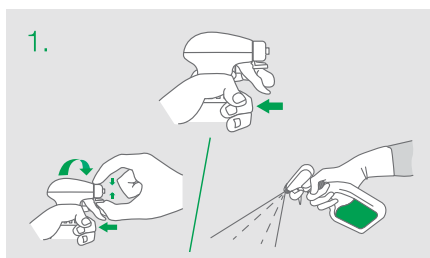


2. Working from clean to dirty, wipe in an 'S' shaped pattern, taking care not to go over the same area twice.

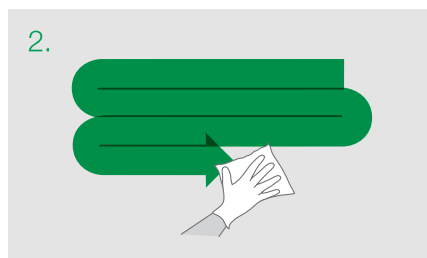


3. Change wipe if it becomes dry or soiled and dispose of in the appropriate waste bin. Let the surface air dry.

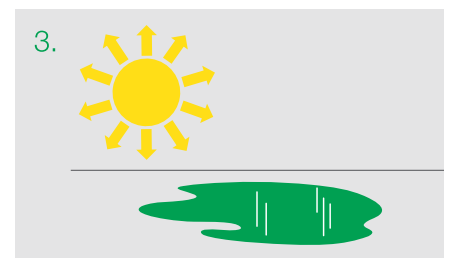
### SPRAY:



- Pull trigger slightly to open.
- Whilst pulling the trigger, pinch and turn the nozzle onto the surface.
- Spray evenly onto the surface.



2. Working from clean to dirty, wipe in an 'S' shaped pattern, taking care not to go over the same area twice.



3. Let the surface air dry.

# SURFACE DISINFECTION AND CLEANING OF NON-INVASIVE MEDICAL DEVICES

Proven to kill at least  
**99.99%** of germs  
and is effective from 10 seconds.



Clinell Universal Wipes & Universal Spray can be used to disinfect and clean non-invasive medical devices. If unsure please contact the Infection Prevention and Control Team.

PRODUCT	UNIT OF ISSUE	ORDER CODE	NHSSC
Universal Wipes 200	Pack of 200 Wipes	CW200/SP/ISR	VJT118
Universal Wipes Adhesive Back 50	Pack of 50 Wipes	CWAB50/SEU	VJT518
Universal Wipes Clip Pack 50	Pack of 50 Wipes	CWCP50/SP/SEU	VJT253
Universal Wipes 100 Pack	Pack of 100 Thick Wipes	CW100	-
Universal Wipes 100 Pack	Pack of 100 Standard Wipes	CW100EU	-
Universal Wipes - Economy 360	Pack of 360 Wipes	CWF360E	-
Universal Maceratable Wipes 160	Pack of 160 Maceratable Wipes	CWFM160	-
Universal Wipes Tub 100	Tub of 100 Wipes	CWTUB100/SEU/MENA/SP/ISR	VJT223
Universal Wipes Tub Refill 100	Refill of 100 Wipes	CWTUB100R/R2	VJT224
Universal Wipes Bucket 225	Bucket of 225 Wipes	CWBUC225/SEU/ISR	VJT190
Universal Wipes Bucket Refill 225	Refill of 225 Wipes	CWBUC225R	VJT192
Universal Spray 500	500ml Spray Bottle	CDS500/SP	-
Universal Spray 750	750ml Spray Bottle	CDS750	-

## REFERENCES

1. According to EN 14476.
2. Bloomfield SF. Significance of biocide usage and antimicrobial resistance in domiciliary environments. *Journal of Applied Microbiology*. 2002;92(s1).
3. The Design Council. Case study. Design bugs out. [Available from <http://www.designcouncil.org.uk/resources/case-study/design-bugs-out>]
4. Sanders S. The stethoscope and cross-infection. *Br J Gen Pract*. 2003 Dec;53(497):971-2.
5. Cohen SR, McCormack DJ, Youkhana A, Wall R. Bacterial colonization of stethoscopes and the effect of cleaning. *J Hosp Infect*. 2003 Nov;55(3):236-7.
6. Buus-Frank, M.E. Hands that heal-hands that harm. *Advances in Neonatal Care* 2004. Oct;4:5:251-255.
7. Bureau-Chalot F, Drieux L, Pierrat-Solans C, Forte D, de Champs C, Bajolet O. Blood pressure cuffs as potential reservoirs of extended-spectrum  $\beta$ -lactamase VEB-1-producing isolates of *Acinetobacter baumannii*. *Journal of Hospital Infection*. 2004 Sep 30;58(1):91-2.
8. Lobaz S, Didee R, Collins J, White D. Pathogenic colonisation of hospital badges and neck lanyards in the anaesthetic/theatre environment. *Anaesthesia*. 2012 Feb 1;67:44.

**CE 0050** Class IIa Medical Device

**USE DISINFECTANTS SAFELY.  
ALWAYS READ THE LABEL AND PRODUCT  
INFORMATION BEFORE USE.**

**ALWAYS FOLLOW MEDICAL EQUIPMENT  
MANUFACTURER'S CLEANING PROCEDURES  
AND GUIDELINES.**

Clinell's industry leading aftercare and training services include our revolutionary training kit, specialised nurse trainers, educational materials, customised posters and dispenser installation. For more information, contact us on: 020 7993 0030 or [info@clinell.com](mailto:info@clinell.com).

JBN200640